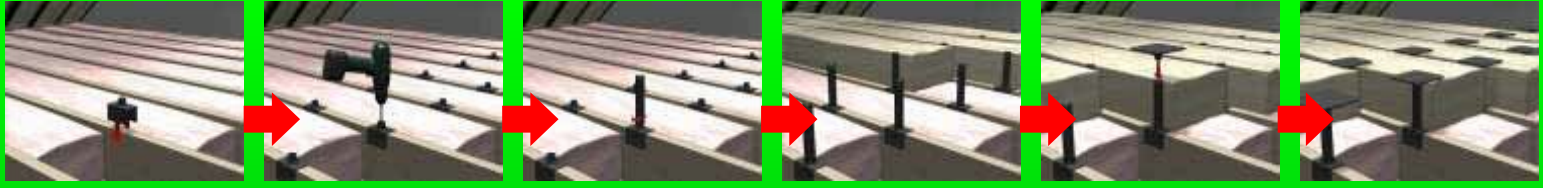


Loftlifters

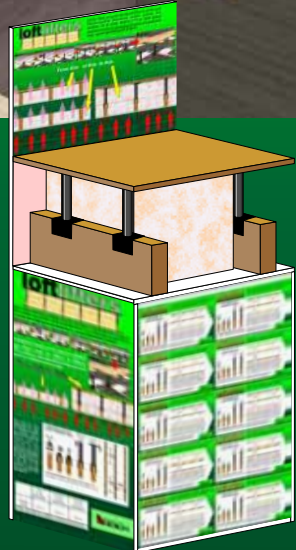


Easily fitted, purpose designed, strong, reinforced Polypropylene Elevators which enable the addition of at least 180mm (7") of roof space insulation and the subsequent fitting of a walkable floor - and in SEVEN EASY STEPS!

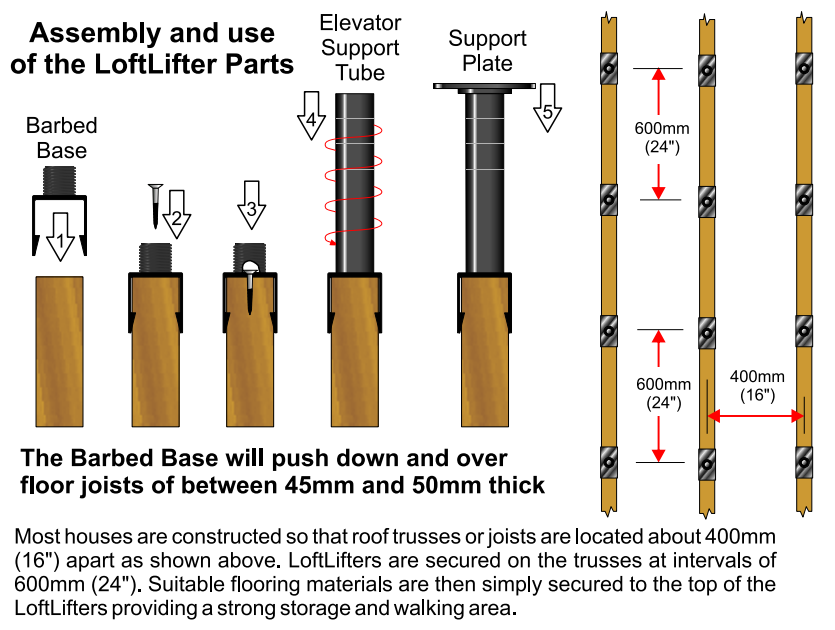


Available in boxes of 12, these LoftLifter legs when used on rafters at 400mm (16") centres, will permit the laying of at least 1.2² metres of flooring.

As a general rule, a box of 12 LoftLifters will enable the support of 1.2² metres of standard 1200mm x 330mm flooring boards. The table below indicates how many LoftLifters are needed for given areas. Because much will depend on the layout and materials being used; these figures are only intended as a guide.



A display unit holding 20 boxes of LoftLifters is available on request. It measures 1610mm high by 600mm wide by 450mm deep.



	1 box of 12 LoftLifters	2 boxes of 12 LoftLifters	3 boxes of 12 LoftLifters
Support Area	1.2 ² m	2.4 ² m	3.6 ² m
When used with the 1200mm x 330mm flooring boards			



Code	Description	Gross Weight Kg.	Package Dimensions mm	Price €	Barcode
LL1	Box of 12 LoftLifters	1.575	Width 280 Height 150 Depth 210	23.90	5391524310139

